

COMMERCIALLY ZONED LAND FOR SALE

Main Entrance to Kia Motors Assembly Plant at Kia Blvd & I-85

8.95± Acres & 18.13± Acres

West Point, Troup County, Georgia



ACREAGE

8.95± and 18.13± acres

TOPOGRAPHY

Gently rolling

ACCESS

Accessible at existing intersection of Kia Blvd and Kia Pkwy

CURRENT ZONING

Commercial

West Point municipality for permitting

8.95± ACRE ROAD FRONTAGE

85 ft. frontage on Kia Blvd

975 ft. frontage on Kia Pkwy

18.13± ACRE ROAD FRONTAGE

1,200± ft. frontage on Kia Blvd

900± ft. frontage on Kia Pkwy

UTILITIES

Public water, sewer, electricity, fiber optic cable & telephone all along Kia Blvd

DISTANCES

- 10 miles south of LaGrange, GA
- 66 miles to Atlanta Hartsfield Jackson International Airport
- 86 miles to Montgomery, AL
- 41 miles to Columbus, GA

Location

NW/Q of I-85 and Kia Blvd. Exit 6

Located directly across the main entrance to the KIA Motors assembly plant that produces all the Hyundai Santa Fe, Kia Sorento and the Kia Optima cars for North America

Located within the City limits of West Point, Troup County

Kia Motors

(Main entrance across the street)

Current capacity is 360,000 cars annually. Since 2011, the West Point auto factory has been manufacturing models of the Hyundai Santa Fe, Kia Sorento and the Kia Optima.

Operates 3 shifts with a total of approximately 3,000 employees

Another approximately 3,000 vendor employees are in adjacent facilities. All totaled, Kia and its suppliers have more than 11,000 jobs in the West Point region.

The 2.2 million square foot manufacturing plant is part of the 2,200 acres of land that allow for future expansion.

To date, Kia Motors has invested more than \$1 billion in assembly plant, and the stamping, welding, paint, transmission facilities.

The development also includes a 2 mile test track.

July 11, 2013 Kia Motors celebrated its one millionth vehicle at this assembly plant in just over 3½ years of production

NAI Brannen Goddard

Commercial Real Estate Services, Worldwide.

404 812 4000 | fax 404 816 3939 | www.naibg.com

Suite 1100 | 5555 Glenridge Connector | Atlanta GA 30342

Information is deemed from reliable sources. No warranty is made as to its accuracy.

ERNIE WILLIAMS

404 812 4048

ewilliams@naibg.com

STAN WILLIAMS

404 812 4069

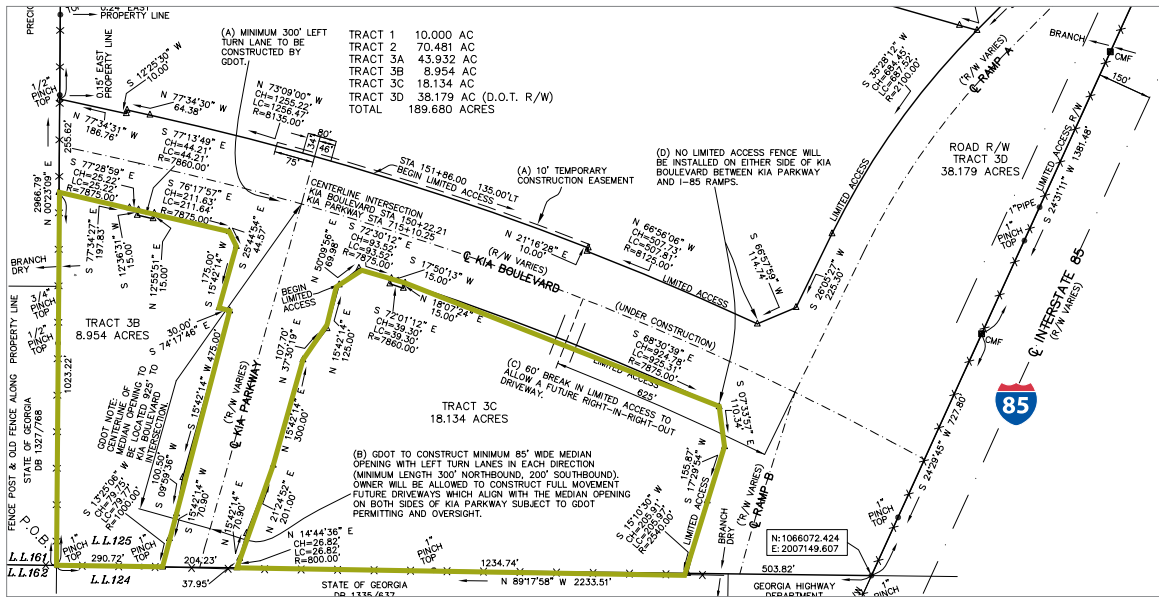
swilliams@naibg.com

COMMERCIALLY ZONED LAND FOR SALE

Main Entrance to Kia Motors Assembly Plant at Kia Blvd & I-85

8.95± Acres & 18.13± Acres

West Point, Troup County, Georgia



ACREAGE

8.95± and 18.13± acres

TOPOGRAPHY

Gently rolling

ACCESS

Accessible at existing intersection of Kia Blvd and Kia Pkwy

CURRENT ZONING

Commercial

West Point municipality for permitting

8.95± ACRE ROAD FRONTAGE

85 ft. frontage on Kia Blvd

975 ft. frontage on Kia Pkwy

18.13± ACRE ROAD FRONTAGE

1,200± ft. frontage on Kia Blvd

900± ft. frontage on Kia Pkwy

UTILITIES

Public water, sewer, electricity, fiber optic cable & telephone all along Kia Blvd

Nearby Points of Interest

Callaway Gardens (21 miles)

13,000 acres in Pine Mountain, GA is a major tourist attraction with its world famous gardens, one of the world's largest indoor butterfly exhibits

Roosevelt's Little White House in Warm Springs (36 miles)

This historic site of former President Franklin D. Roosevelt's summer cottage home

Pine Mountain Wild Animal Safari (15 miles)

a 500 hundred acre wild life animal park that allows one to reach out one's car window to feed the exotic animals

West Point Lake (6 miles)

This 26,000 acre lake is one of the area's most popular tourist attractions



Commercial Real Estate Services, Worldwide.

404 812 4000 | fax 404 816 3939 | www.naibg.com

Suite 1100 | 5555 Glenridge Connector | Atlanta GA 30342

Information is deemed from reliable sources. No warranty is made as to its accuracy.

ERNIE WILLIAMS

404 812 4048

ewilliams@naibg.com

STAN WILLIAMS

404 812 4069

swilliams@naibg.com